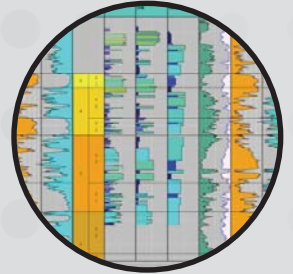


# Connect the Dots!

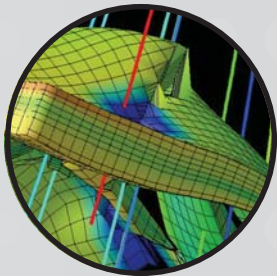
**Geotrace's Tigress E&P information system connects seismic data, well logs and production information**

## Petrophysics

The Petrophysics module allows you to characterize the reservoir by analysing log, core and formation test data. A comprehensive set of applications is provided for log and core data manipulation and correction, parameter calculation and log analysis for both open- and cased-hole logs. Both input and output data can then be zonally averaged for use in mapping. Advanced reservoir characterisation programs are available to assist in zonal analyses, and the user can build, or link to, customised programming routines for further analysis.



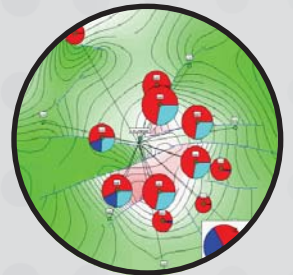
## Simulation



Simulation provides a wide range of analysis techniques for black oil, compositional and EOR simulation including thermal modelling, with gas condensate and dual porosity options. Both IMPES and fully implicit time stepping methods are supported for 1D, 2D and 3D models. A unique strength is the use of the integrated project database as the focal point for the compilation and management of the sequence of models required in a simulation study. No keyword files are necessary as all data is stored in the database. The architecture of the Simulation module allows seamless use of third party simulators.

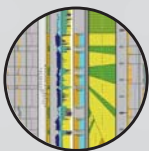
## Production Data Management and Analysis (PUMA)

PUMA is used for the analysis, manipulation and easy visualisation of recent and historical production data. As the E&P industry's most advanced Field and Well Management IT Tool, PUMA helps with short-term production gains, as well as for long-term reserves gains through early identification of reservoir management opportunities such as optimizing areal drainage and adjusting injection levels. Advanced plotting and reporting tools provide excellent templates for the creation of high quality output.



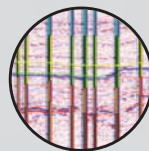
## Geology

Geology allows you to model the chrono, litho and fluid stratigraphy of the reservoir, using multi-well, multi-level zonations, and correlation and cross-section interpretations.



## Geophysics

Geophysics provides a complete set of applications for the interpretation of 2D and 3D seismic data, seismic attribute analysis and the generation of synthetic seismograms to tie in geological models.

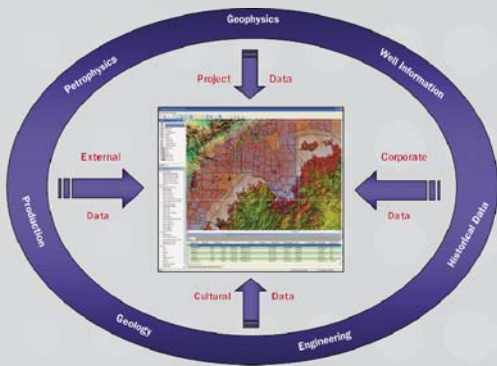


# Load Data Once, Use it Everywhere!

## Data Management Solutions

A single, integrated database that's easy to populate, easy to interrogate, and affordable to implement.

- Real time storage & retrieval
- Extensive QC tools
- Multiple layers of security
- Facilitates A&D activity
- Integrates with industry standard data sources
- Comprehensive data model
- Implementation services



The Data Management solution is a practical and affordable means for any size oil company to enjoy the benefits of a secure, stable, and integrated environment. Tigress delivers a fit-for-purpose approach that protects your investment in all E&P data types as well as capturing the knowledge related to your assets. All data is accessible through a flexible, easy to use browser which requires minimal training for proficiency and allows rapid access to the entire data store. Your data is your greatest asset. Protect it and its integrity with the industry's leading data management system!

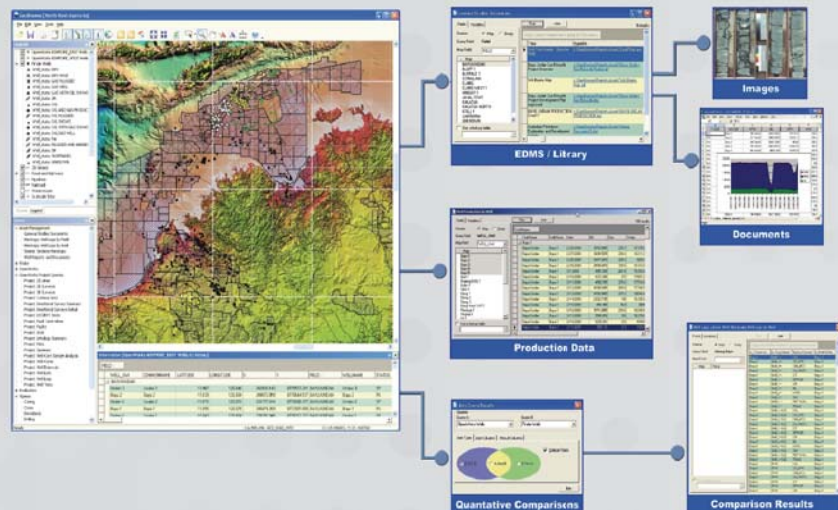
## Geobrowse

### Windows-based tool for data mining and integration

Geobrowse provides a unique approach to dynamic database querying, enabling data from multiple disparate databases to be visualized and compared without any data movement, manipulation, re-formatting or re-loading. Map data is displayed in a consistent, user defined coordinate system with projections and datum conversions handled on the fly.

Geobrowse links to a wide variety of industry data sources allowing queries on a broad range of data types including:

- Subsurface Data
- Production Data
- GIS and Image Data
- Engineering Data
- Geochemistry Data
- Library Data
- Spreadsheets
- Document Management Systems
- Third-party Databases (OpenWorks, GeoFrame, Finder, SMT and Petra)



©2008 Geotrace All Rights Reserved



GEOCENTERS IN HOUSTON, DALLAS, LONDON AND CAIRO  
OFFICES WORLDWIDE

[www.geotrace.com](http://www.geotrace.com)