

High Resolution Site Survey Processing

Geotrace has developed a series of technologies which are ideally suited to the processing of High Resolution Site Surveys, and also has significant experience in processing such surveys.

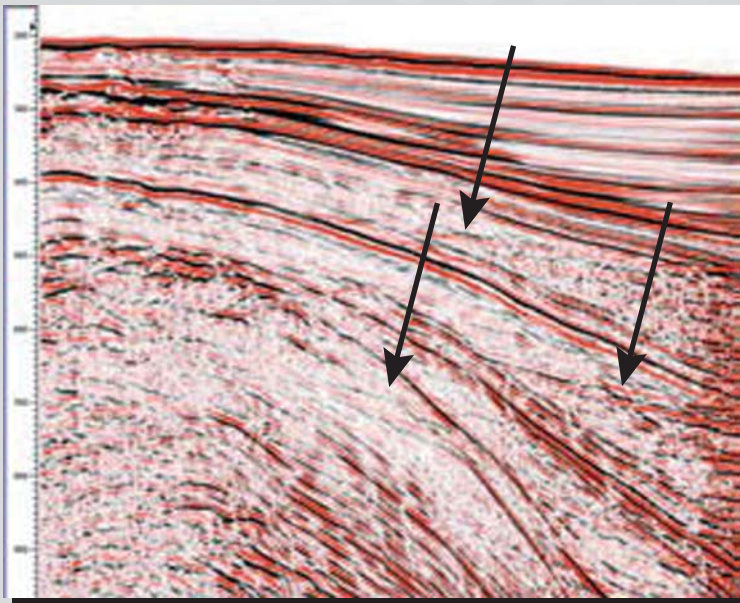
We offer a “High Technology” approach, with the 7 to 28 day turnaround normally associated with basic processing routes.

Some of the Technology Highlights are:

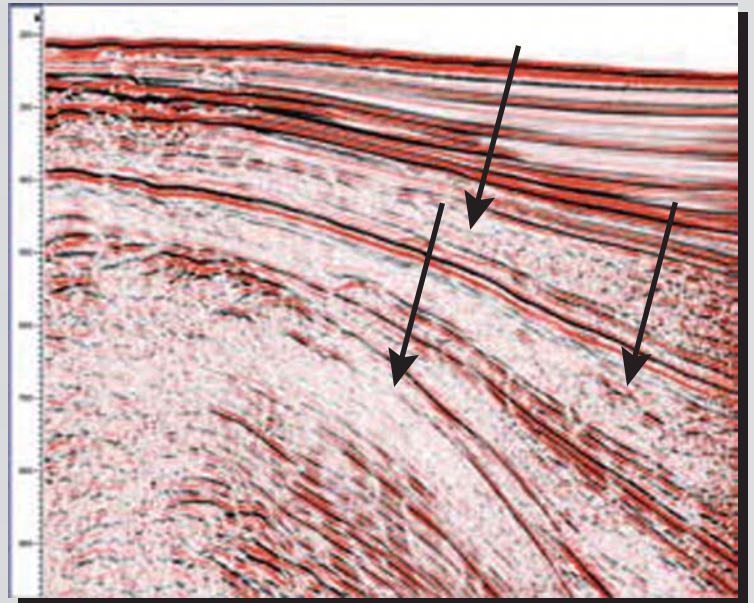
- *Swell Noise attenuation using TFDNoise™*
- *SRME - MARST™*
- *Predictive Deconvolution in the Linear Tau-p Domain*
- *Kirchhoff Prestack Time Migration*

Multiple Attenuation on Low Offsets

Hazard surveys typically use low-offset, low-fold acquisition. Traditional multi-channel demultiple techniques, such as FK or Radon, which rely heavily on moveout velocity discrimination between primary and multiples, often do not offer sufficient resolution on low-offset data.



Traditional techniques



MARST™ Results

Geotrace uses its MARST™ surface-related multiple attenuation to address the problem. The technique has proven highly effective at removing multiples from low-offset data in deep or shallow water-bottom environments, and consistently outperforms tau-p deconvolution on these datasets. Geotrace’s superior method of implementing surface related multiple attenuation provides a unique solution to enhancing your high resolution site survey data.

Data courtesy BP Amoco